

HUSTLE HIDEAWAY

A MODERN TAKE ON AN ECLECTIC STYLE

SEVENTIES AND MODERN DESIGN COMPONENTS WORK TOGETHER TO CREATE A FRESH TAKE ON A MEMORABLE DECADE. THE COMBINATION OF RETRO AND CONTEMPORARY DESIGN TRANSPORTS THE GUEST TO THE DECADE WHERE HAVING A GOOD TIME AND ESCAPING SOCIAL RIGORS WAS EMPHASIZED.

TABLE OF CONTENTS	
A1	TITLE PAGE
A2	FLOOR PLAN
A3	FURNITURE PLAN
A4	KITCHENETTE ELEVATION AND DETAIL
A5	RIGHT ENTRY ELEVATION
A6	LEFT ENTRY AND DINING ELEVATION
A7	ENTRY WALL ELEVATION
A8	LIVING ROOM ELEVATION
A9	WALL ELEVATION
A10	HALF BATHROOM ELEVATION
A11	BEDROOM WINDOW ELEVATION
A12	BEDROOM ELEVATION
A13	CLOSET ELEVATION
A14	MASTER BATHROOM ENTRY ELEVATION
A15	MASTER BATHROOM ELEVATION
A16	MASTER BATHROOM TOILET ELEVATION

EMILY PLYSTONE
ASHLEY BROOKS
MORGAN KIENER
ANNIE KRZANIC

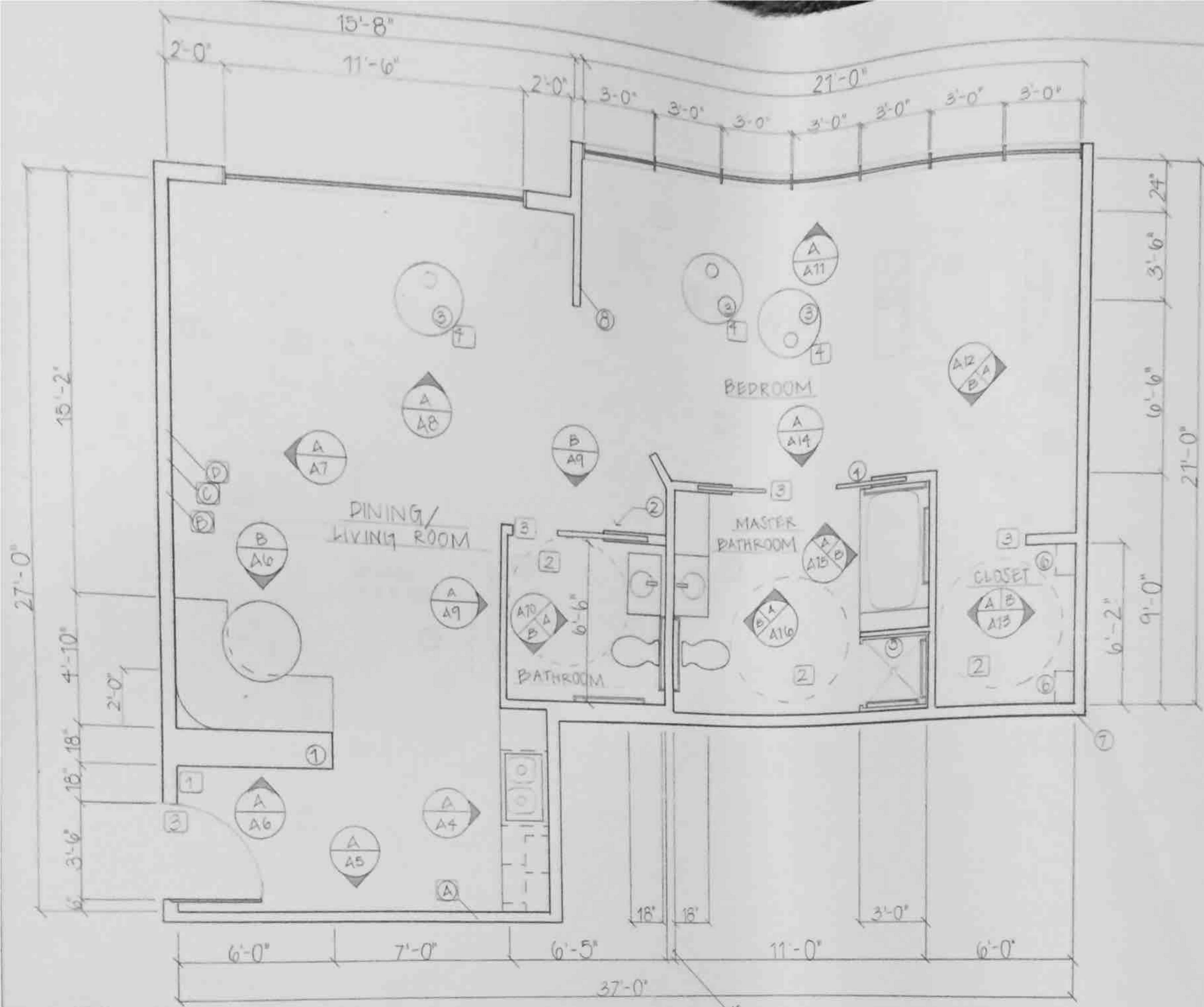
HUSTLE HIDEAWAY
PROJECT 3-ADA HOTEL SUITE
GROUP 3
JILL LAHRMER

DATE:
NOV 9 2016

SCALE:
1/4" = 1'-0"

DRAWN BY:
MORGAN





- ### CODED NOTES
- ① HALF WALL PARTITION 3'-0" TALL
 - ② POCKET DOOR 4'-0"
 - ③ VERTICALLY SUPPORTED BLU CHAIR 2'-7" DIAMETER
 - ④ DOUBLE POCKET DOOR *OPENING 6'-0" *INDIVIDUAL DOOR 3'-0"
 - ⑤ OPTIMAL SHOWER SEAT FOLD OUT 1'-4" FROM SHOWER FLOOR
 - ⑥ BUILT-IN SHELVING 1'-3" x 9" x 3'-0"
 - ⑦ 6" EXTERIOR WALL THICKNESS
 - ⑧ 4" INTERIOR WALL THICKNESS

- ### ADA/UNIVERSAL DESIGN CODED NOTES
- ① DOOR OPENING CLEARANCE 1'-6"
 - ② AT LEAST 5'-0" TURNING RADIUS
 - ③ AT LEAST 2'-6" DOOR OPENING
 - ④ ROTATING CHAIRS SUPPORTED VERTICALLY WITH STEEL POLE FOR STABILITY

- ### FINISH CODED NOTES
- A PAINT COLOR THROUGHOUT SUITE - VALSPAR BLEAH SLATE
 - B SHERWIN WILLIAMS MELLOW MANGO
 - C KNOLL TEXTILES ULTRAJUVEDE WALL COVERING IN CLAY
 - D SHERWIN WILLIAMS MELLOW MANGO

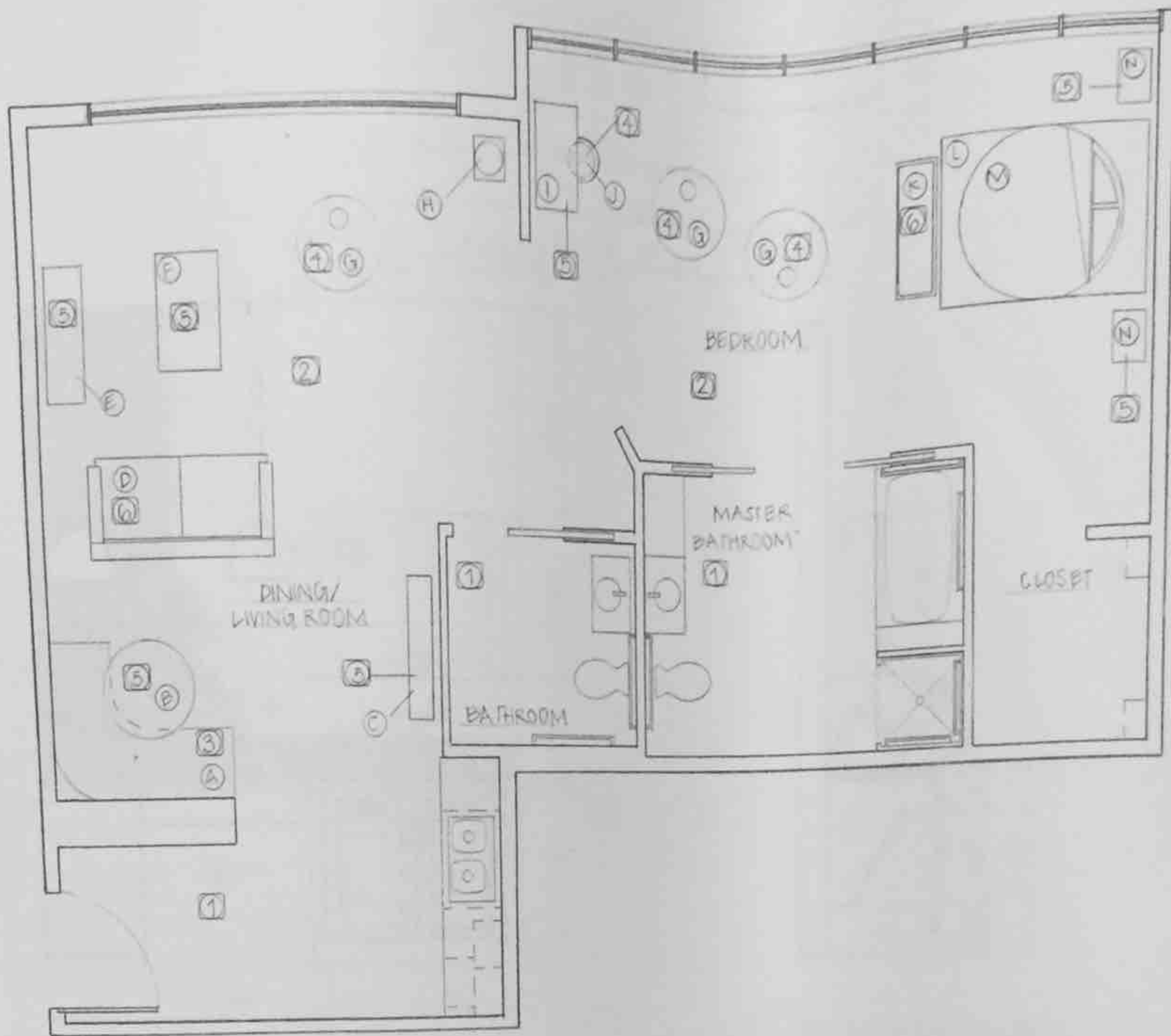
EMILY BLYSTONE
ASHLEY PROOKS
MORGAN KIENER
ANNIE KRZNARIC

HUSTLE HIDEAWAY
PROJECT 3 - ADA HOTEL SUITE
GROUP 3
JILL LAHEMER

DATE
NOV 1 2016
SCALE
1/4" = 1'-0"
DRAWN BY
MORGAN



A FLOOR PLAN
A2 SCALE: 1/4" = 1'-0"



FURNITURE DIMENSIONS

- (A) BOOTH SEATING
DEPTH 2'-0"
HEIGHT FLOOR TO SEAT 1'-4"
- (B) EAT-IN TABLE
3'-0" DIAMETER
HEIGHT 2'-6"
- (C) ENTRY TABLE:
4'-6" x 9" x 2'-0"
- (D) COUCH
6'-0" x 3'-0" x 3'-0"
- (E) TV STAND
4'-0" x 1'-3" x 3'-0"
- (F) COFFEE TABLE
3'-6" x 2'-0" x 1'-8"
- (G) EGG CHAIR
DIAMETER 2'-7"
HEIGHT FLOOR TO SEAT 1'-8"
- (H) ARC FLOOR LAMP
BASE 15" x 12"
HEIGHT 86"
- (I) DESK
3'-0" x 1'-6" x 3'-0"
- (J) DESK CHAIR
DIAMETER 1'-0"
HEIGHT OF SEAT 3'-0"
- (K) BENCH
4'-0" x 1'-9" x 3'-0"
- (L) BED FRAME
6'-6" x 5'-0" x 2'-4"
- (M) MATTRESS
DIAMETER 5'-0"
- (N) SIDE TABLES
1'-6" x 1'-0" x 2'-0"

CODED MATERIALS

- (1) HERITAGE MILL - SHADOW
OAK - WOOD FLOORING
- (2) VIVA COLORES - MORADO
CARPETING
- (3) KNOLL TEXTILES - MARCUS
POLYURETHANE UPHOLSTERY
- (4) KNOLL TEXTILES -
"HEARTH COTTON"
KATAZOME UPHOLSTERY
- (5) ADVANTAGE LUMBER -
BRAZILIAN WALNUT
- (6) KNOLL TEXTILES -
"TRIOLI COTTON UPHOLSTERY"
"PAPER WHITE"

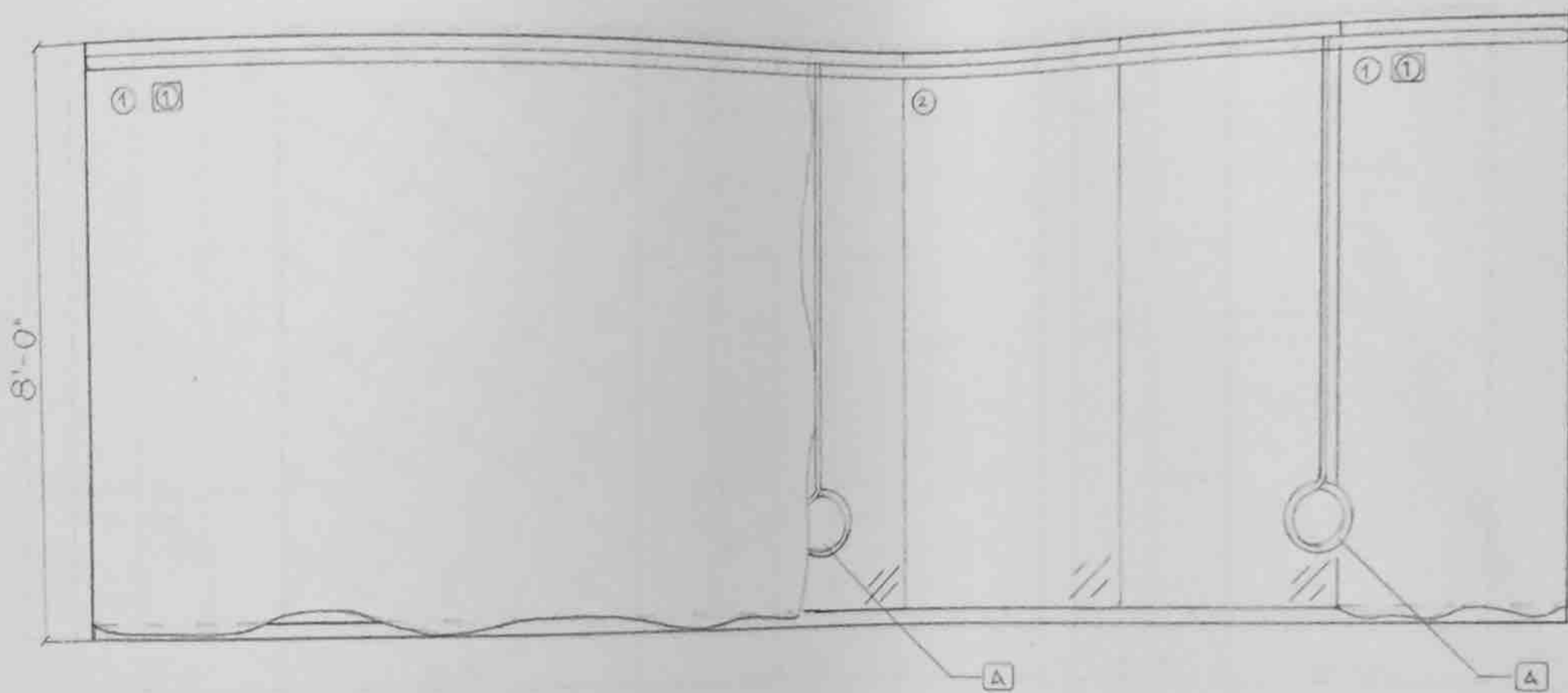
EMILY BLYSTONE
ASHLEY BROOKS
MORGAN KIENER
ANNIE KRZNARIC

HUSTLE HIDEAWAY
PROJECT 3 - APA HOTEL SUITE
GROUP 3
JILL LAHRMER

DATE:
NOV 12 2016
SCALE:
1/4" = 1'-0"
DRAWN BY
MORGAN

A3

A FURNITURE PLAN
A3 SCALE 1/4" = 1'-0"



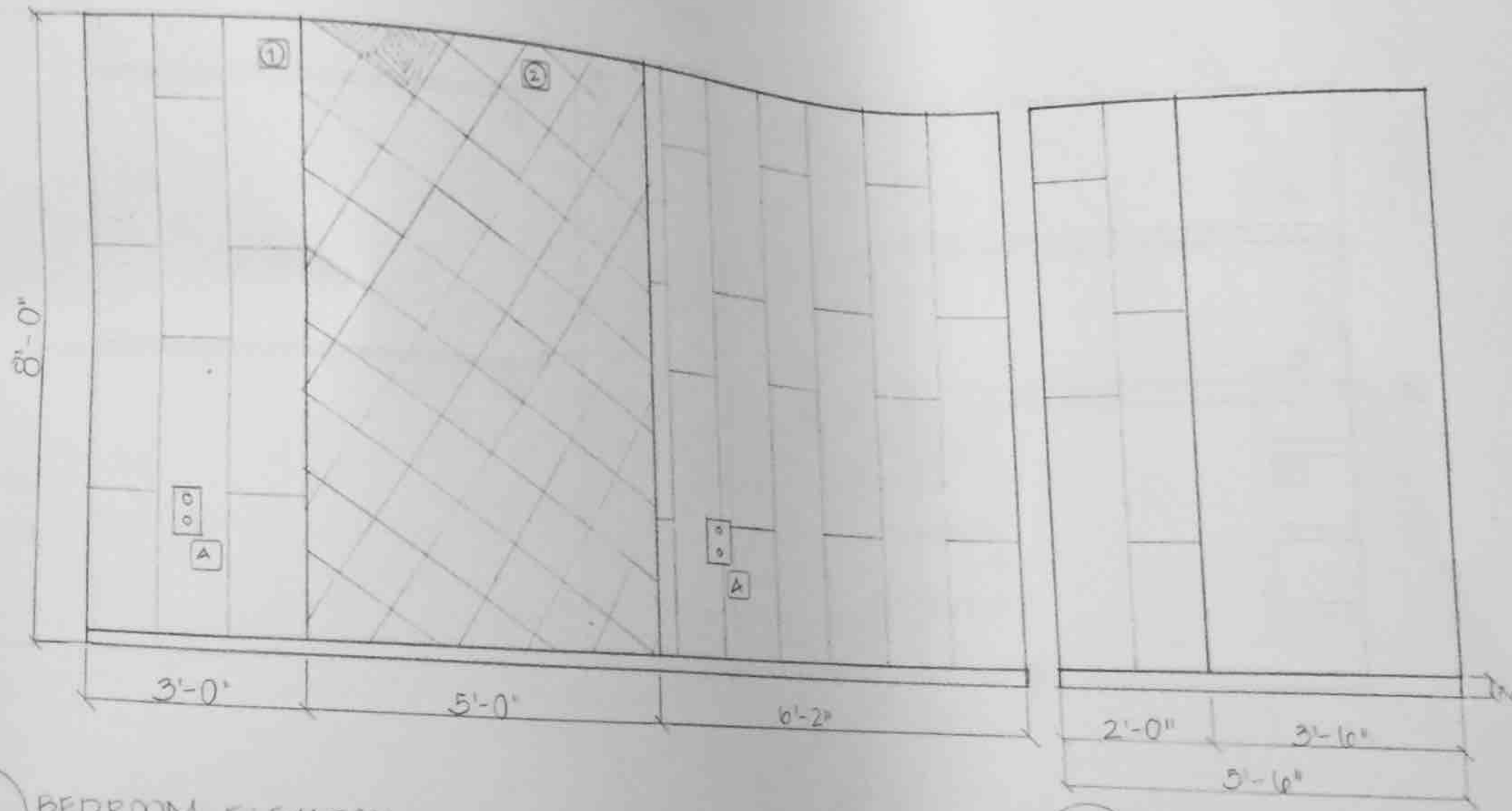
CODED NOTES
 ① CURTAINS
 ② 3'-0" WIDE WINDOWS

ADA/UNIVERSAL DESIGN
CODED NOTES
 [A] HANDICAP ACCESS
 WAND
 1/2" THICKNESS
 6'-0" IN LENGTH

CODED MATERIALS
 ① D.L. COUCH
 FREQUENTLY-FROSTED
 CRYSTAL

A BEDROOM WINDOW ELEVATION
 ALL SCALE 1/2" = 1'-0"

EMILY DIXSTONE	HUSTLE HIDEAWAY	DATE	
ASHLEY BROOKS	PROJECT 3 - APA HOTEL SUITE	NOV 1 2016	
MORGAN KIENER	GROUP 3	SCALE	
ANNIE KRZANIC	JILL LAHKMER	1/2" = 1'-0"	
		DRAWN BY:	
		ASHLEY	



ADA/UNIVERSAL DESIGN
CODED NOTES

A OUTLETS AT LEAST
15" ABOVE FINISH
FLOOR
- 1'-3"

CODED MATERIALS

- ① BRAZILIAN WALNUT
ADVANTAGE LUMBER
- ② SPECIALTY WALL
COVERING
'INSIGNIA' - GOLD CHEST
- D.L. COUCH

EMILY BLYSTONE
ASHLEY BROOKS
MORGAN KIENER
ANNIE KRZNARIC

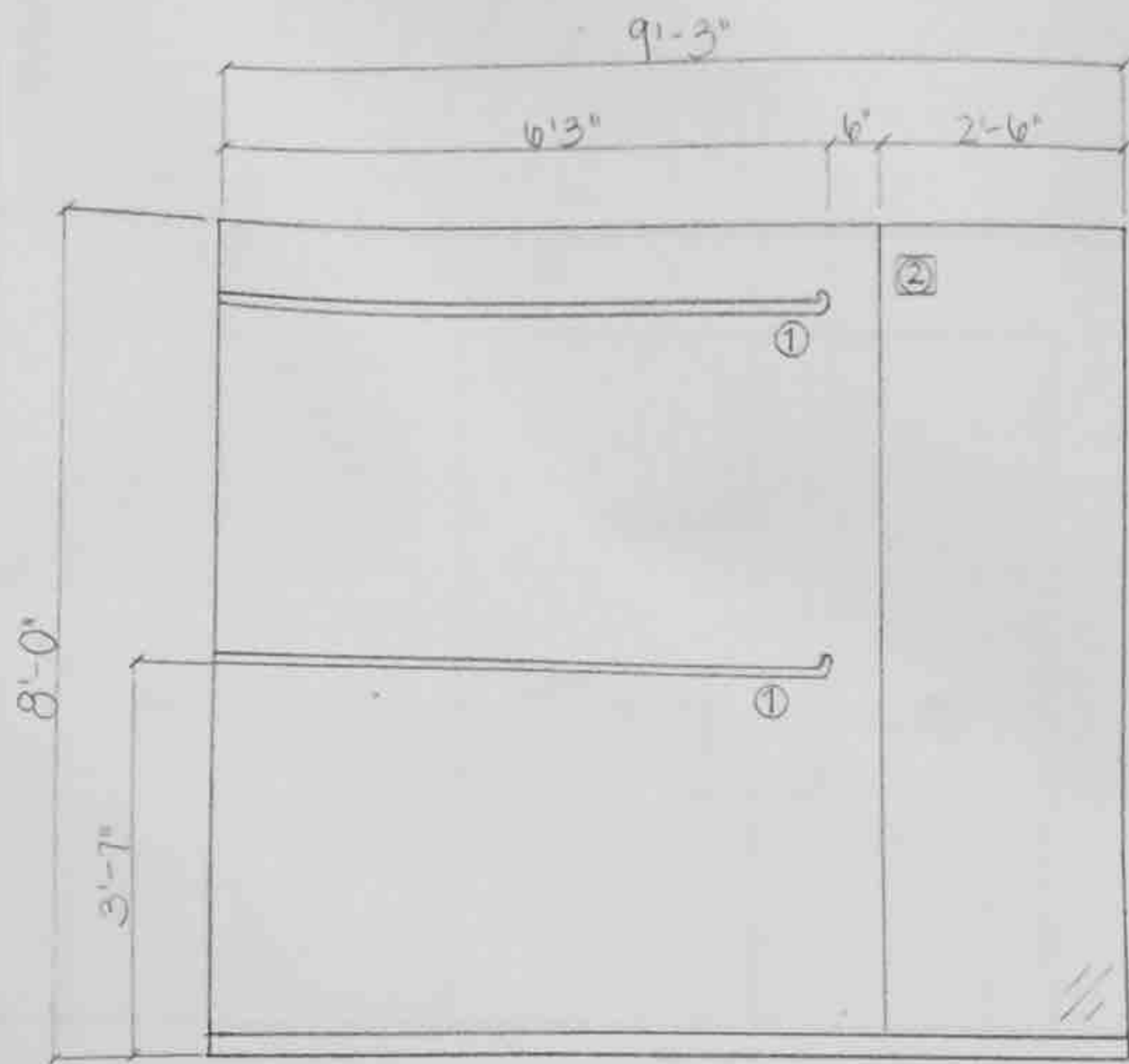
HUSTLE HIDEAWAY
PROJECT 3 - APA HOTEL SUITE
GROUP 3
JILL LAIRMER

DATE
NOV 12 2016
SCALE
1/2" = 1'-0"
DRAWN BY
ASHLEY

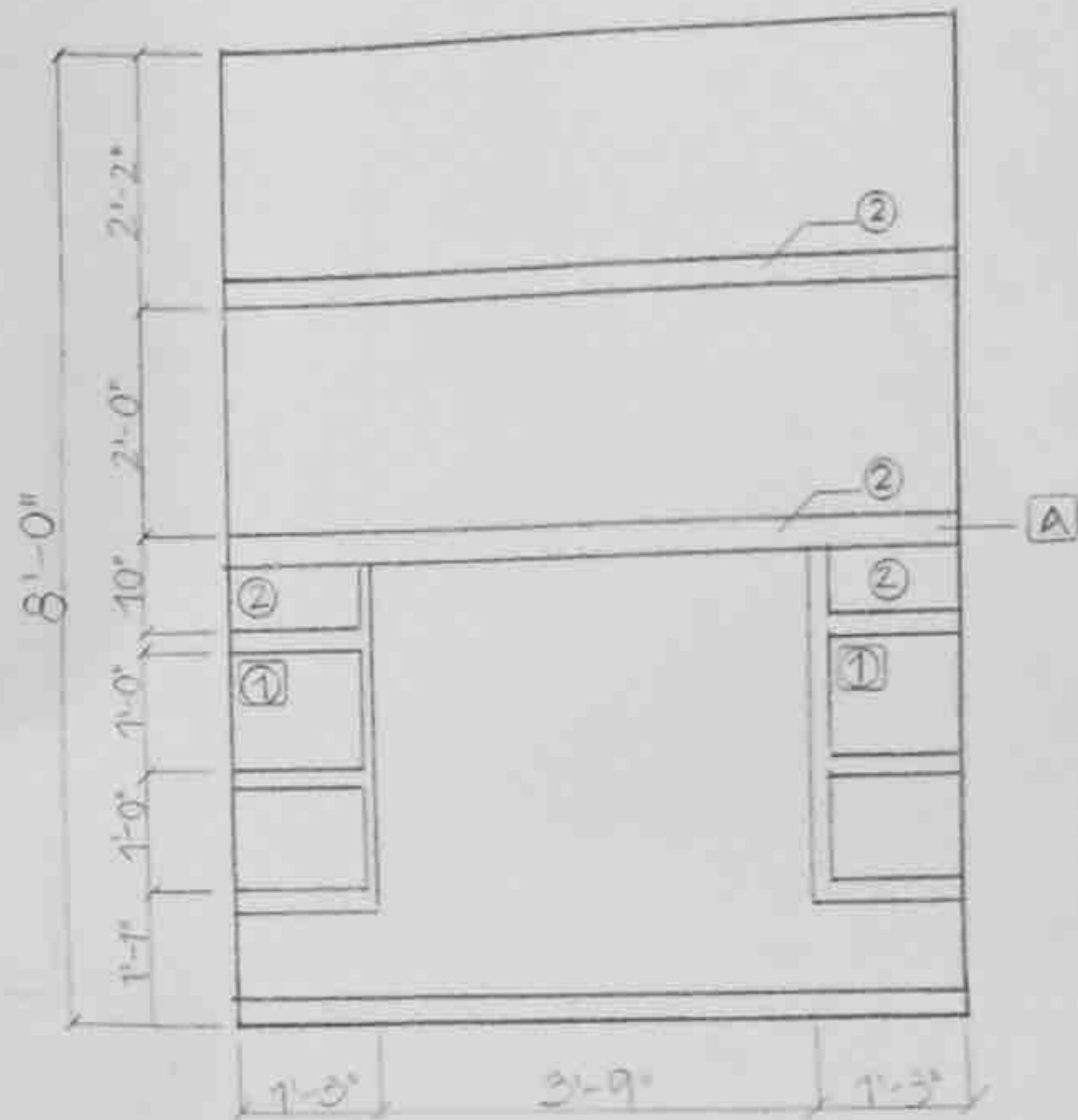
12

A BEDROOM ELEVATION
A12 SCALE: 1/2" = 1'-0"

B CLOSET ENTRY WALL ELEVATION
A12 SCALE: 1/2" = 1'-0"



A CLOSET ELEVATION
 A13 SCALE 1/2" = 1'-0"



B CLOSET ELEVATION
 A13 SCALE 1/2" = 1'-0"

CODED NOTES
 ① STEEL ROD FOR HANGING CLOTHES
 ② BUILT-IN SHELVES

ADA/UNIVERSAL DESIGN CODED NOTES
 [A] ADA STANDARD FOR SHELVING - NO TALLER THAN 4'-0"

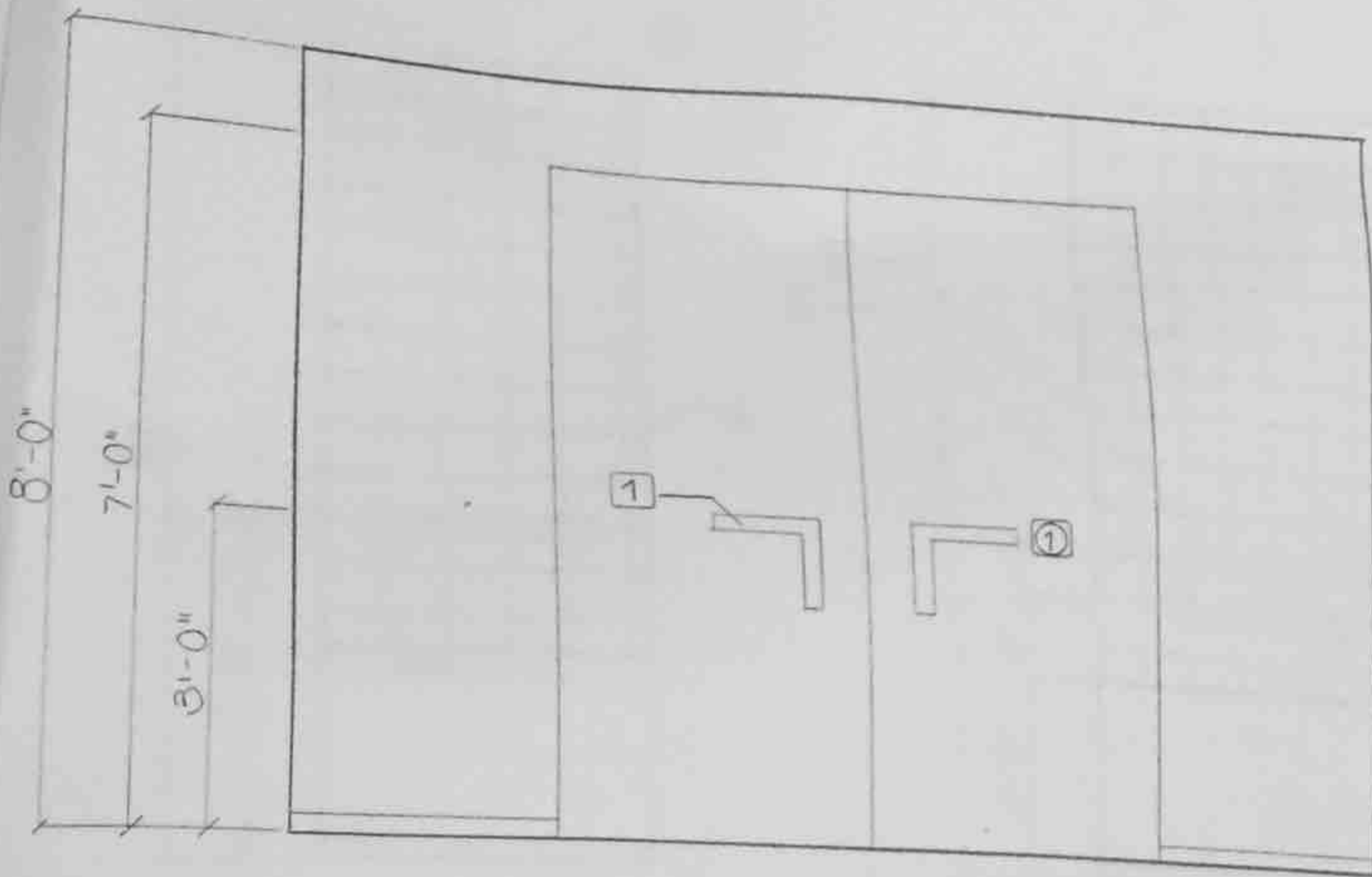
CODED MATERIALS
 ① BRAZILIAN WALNUT ADVANTAGE LUMBER
 ② MIRROR

EMILY BLYSTONE
 ASHLEY PROOKS
 MORGAN KIENER
 ANNE KRZANEC

HUSTLE HIDEAWAY
 PROJECT 3-APA HOTEL SUITE
 GROUP 3
 JILL LAHRMER

DATE
 NOV-1-2016
 SCALE
 1/2" = 1'-0"
 DRAWN BY
 ASHLEY

A13



ADA/UNIVERSAL DESIGN
CODED NOTES

① HANDLE ABLE TO
BE GRABBED FROM
BOTH SIDES
HANDLE 3'-0"
OFF OF GROUND

CODED MATERIALS

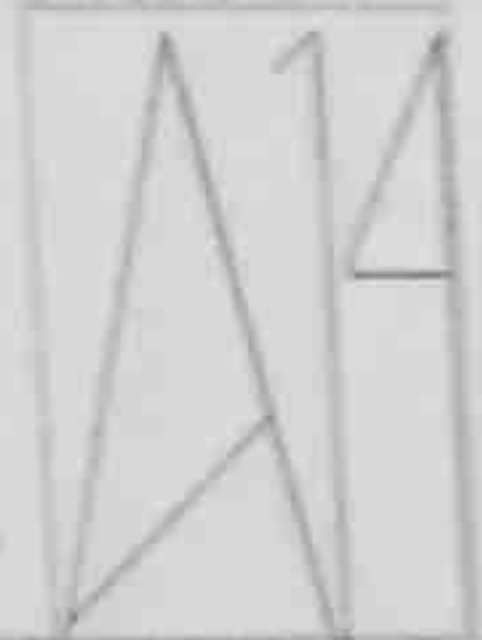
① BRAZILIAN WALNUT
ADVANTAGE LUMBER

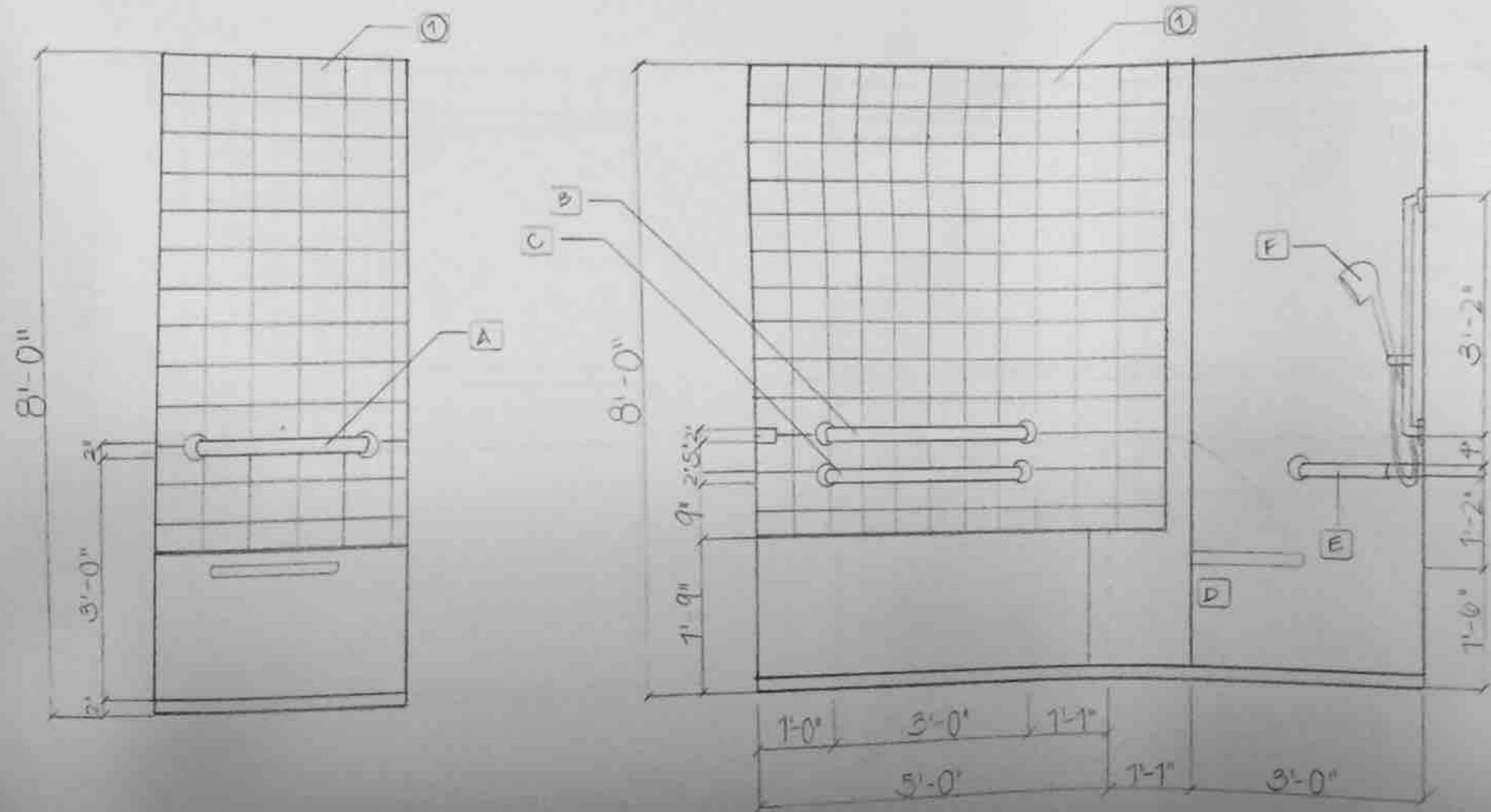
A MASTER BATHROOM ENTRY ELEVATION
A14 SCALE 1/2" = 1'-0"

EMILY PLYSTONE
ASHLEY PROOKS
MORGAN KIFNER
ANNIE KRZNARIC

HUSTLE HIDE AWAY
PROJECT 3-APA HOTEL SUITE
GROUP 3
JILL LAEMMER

DATE
NOV 1 2010
SCALE
1/2" = 1'-0"
DRAWN BY
ASHLEY





ADA/UNIVERSAL DESIGN CODED NOTES

- A GRAB BAR
2'-0" LONG
3'-0" HIGH
- B GRAB BAR
3'-0" LONG
3'-0" HIGH
- C GRAB BAR
3'-0" LONG
0'-9" HIGH FROM TOP OF BATHTUB
- D OPTIMAL SHOWER SEAT
1'-4" HIGH FROM SHOWER FLOOR
- E GRAB BAR
1'-3" LONG
2'-0" LONG ALONG CONTROL WALL WITH SHOWER HEAD
- F ADJUSTABLE SHOWER HEAD:
ARRANGED AT 4'-0" MAXIMUM HEIGHT

CODED MATERIALS

- ① MODWALLS CERAMIC GLAZE TILES "MAGNOLIA" - RED GROUT

A MASTER BATHROOM ELEVATION
A15 SCALE 1/2" = 1'-0"

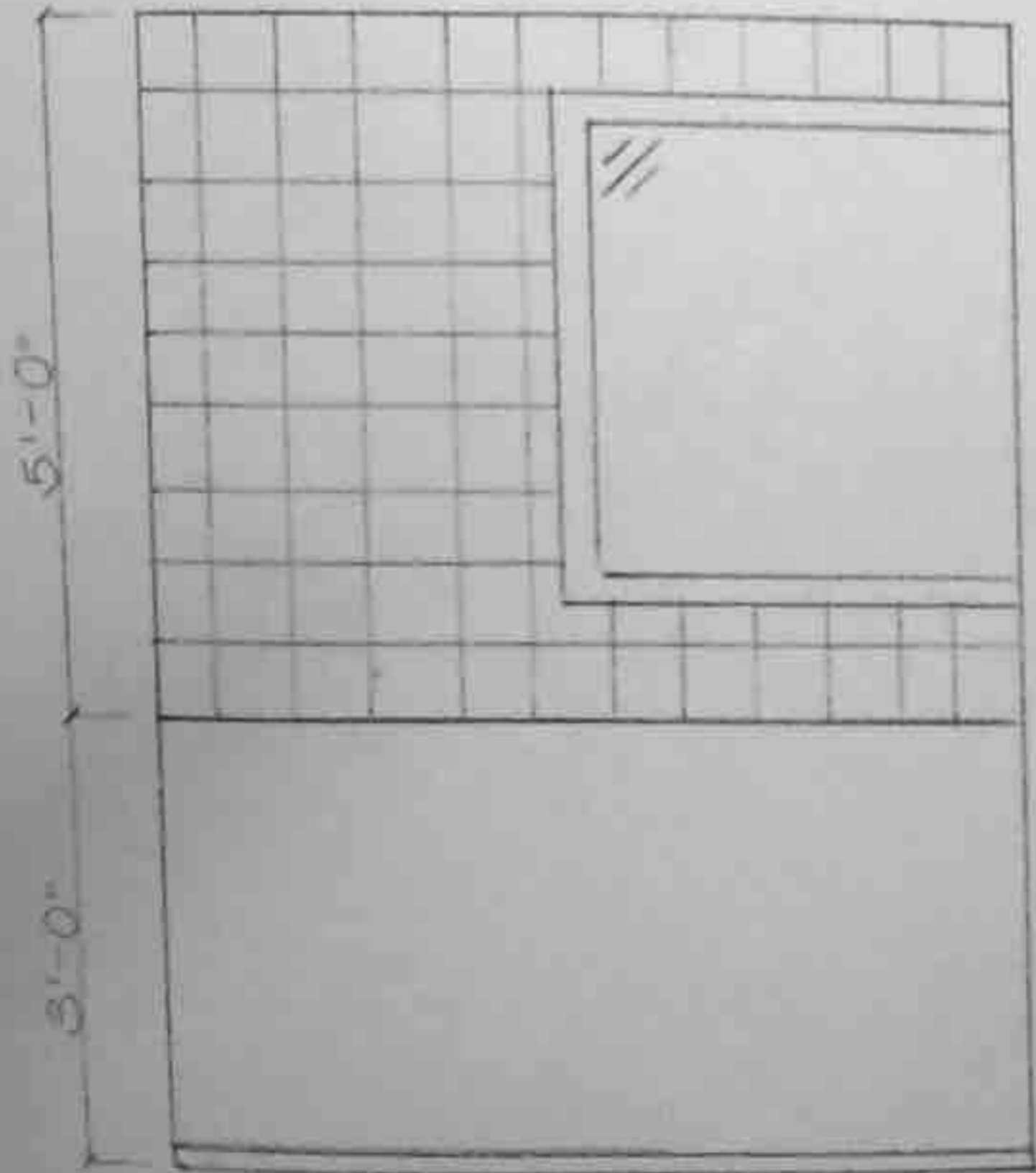
B MASTER BATH AND SHOWER ELEVATION
A15 SCALE 1/2" = 1'-0"

EMILY BLYSTONE
ASHLEY BROOKS
MORGAN KIENER
ANNIE KRZANIC

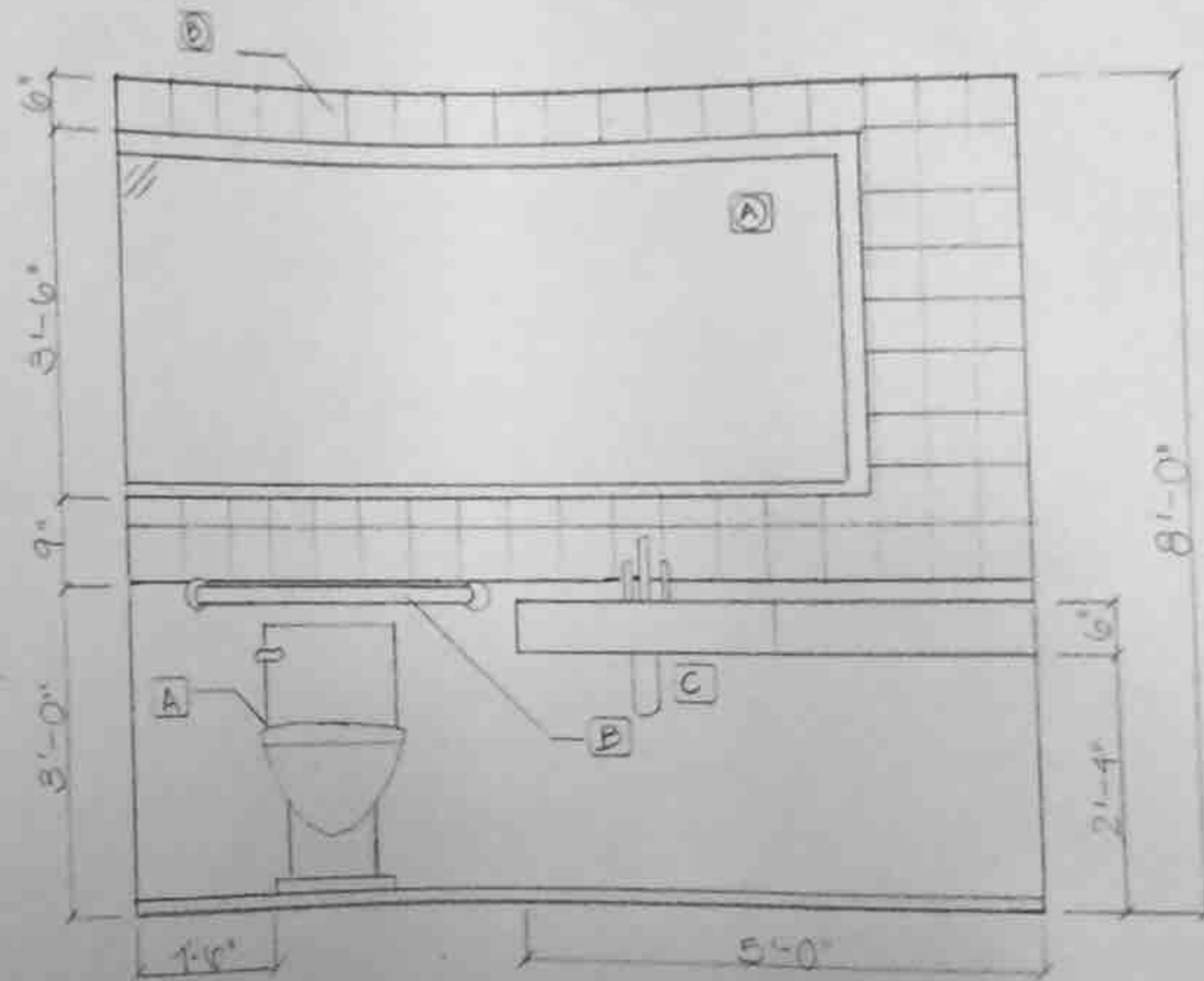
HUSTLE HIDEAWAY
PROJECT 3: ADA HOTEL SUITE
GROUP 3
JILL LAHRMER

DATE
NOV 1 2016
SCALE:
1/2" = 1'-0"
DRAWN BY
ASHLEY





A MASTER BATHROOM ELEVATION
SCALE 1/2" = 1'-0"



B MASTER BATHROOM TOILET ELEVATION
SCALE 1/2" = 1'-0"

ADA/UNIVERSAL DESIGN
CODED NOTES

- A TOILET SEAT HEIGHT
19" FROM FLOOR
- 1'-6" FROM WALL
- B GRAB BAR
- 3'-0" FROM FLOOR
- CENTERED ABOVE
TOILET
- C SINK 27" MINIMUM
HEIGHT
- 30" MINIMUM ROLL
UP CLEARANCE

CODED MATERIALS

- A MIRROR
- 1' DISTANCE FROM
SINK
- 10'-6" LONG
- 3'-2" TALL
- B MOD WALLS CERAMIC
GLAZE TILES
"MAGNOLIA"

EMILY BLYSTONE
ASHLEY BROOKS
MORGAN KIFNER
ANNIE KRZNARIC

HUSTLE HIDEAWAY
PROJECT 5 - ADA HOTEL SUITE
GROUP 5
JILL LAIRMER

DATE:

NOV 1 2016

SCALE:

1/2" = 1'-0"

DRAWN BY:

ASHLEY

16